

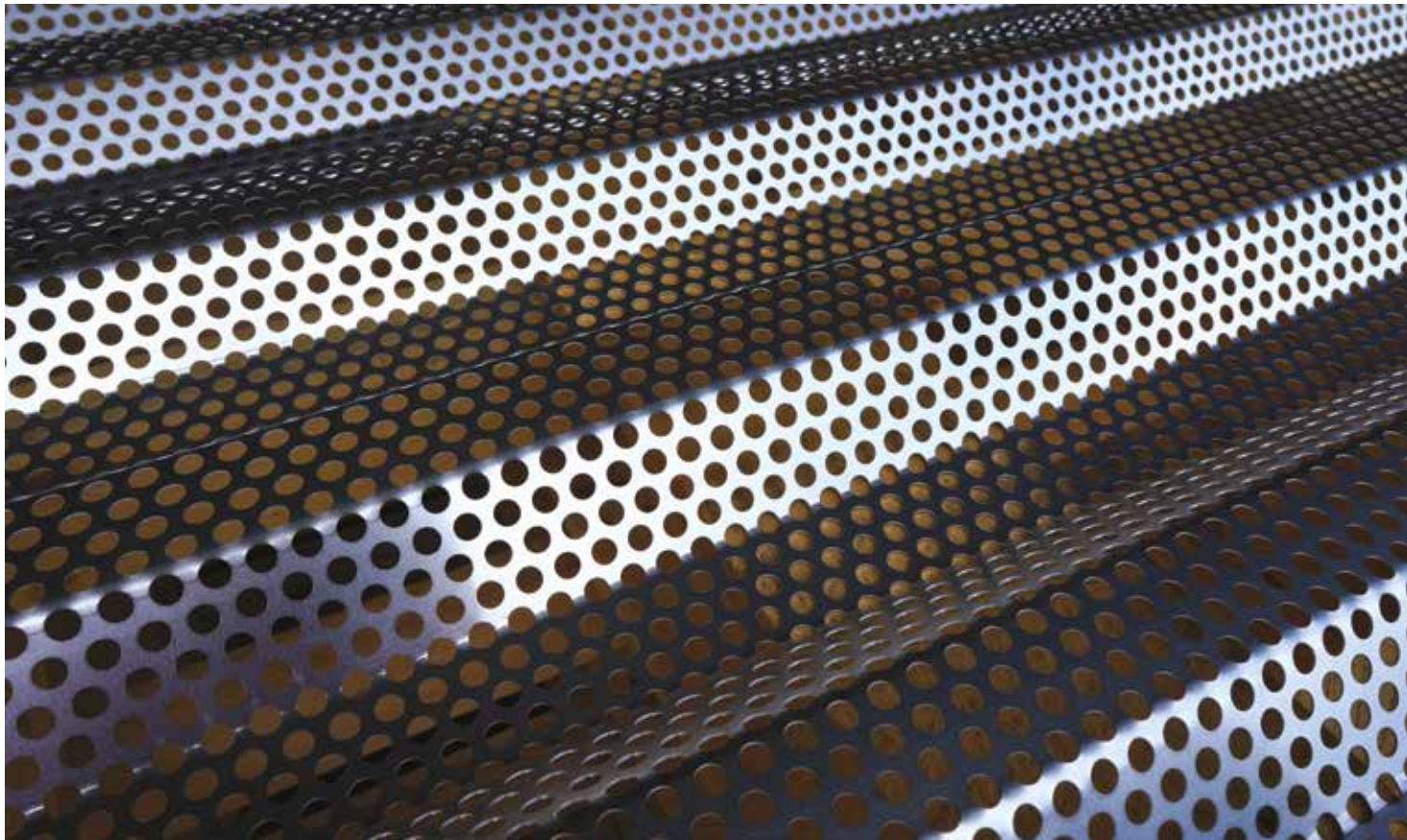
Metal Wall & Roof Systems  
North America

Protected by



# Perforated Panels Architectural Metal Wall and Roof Systems

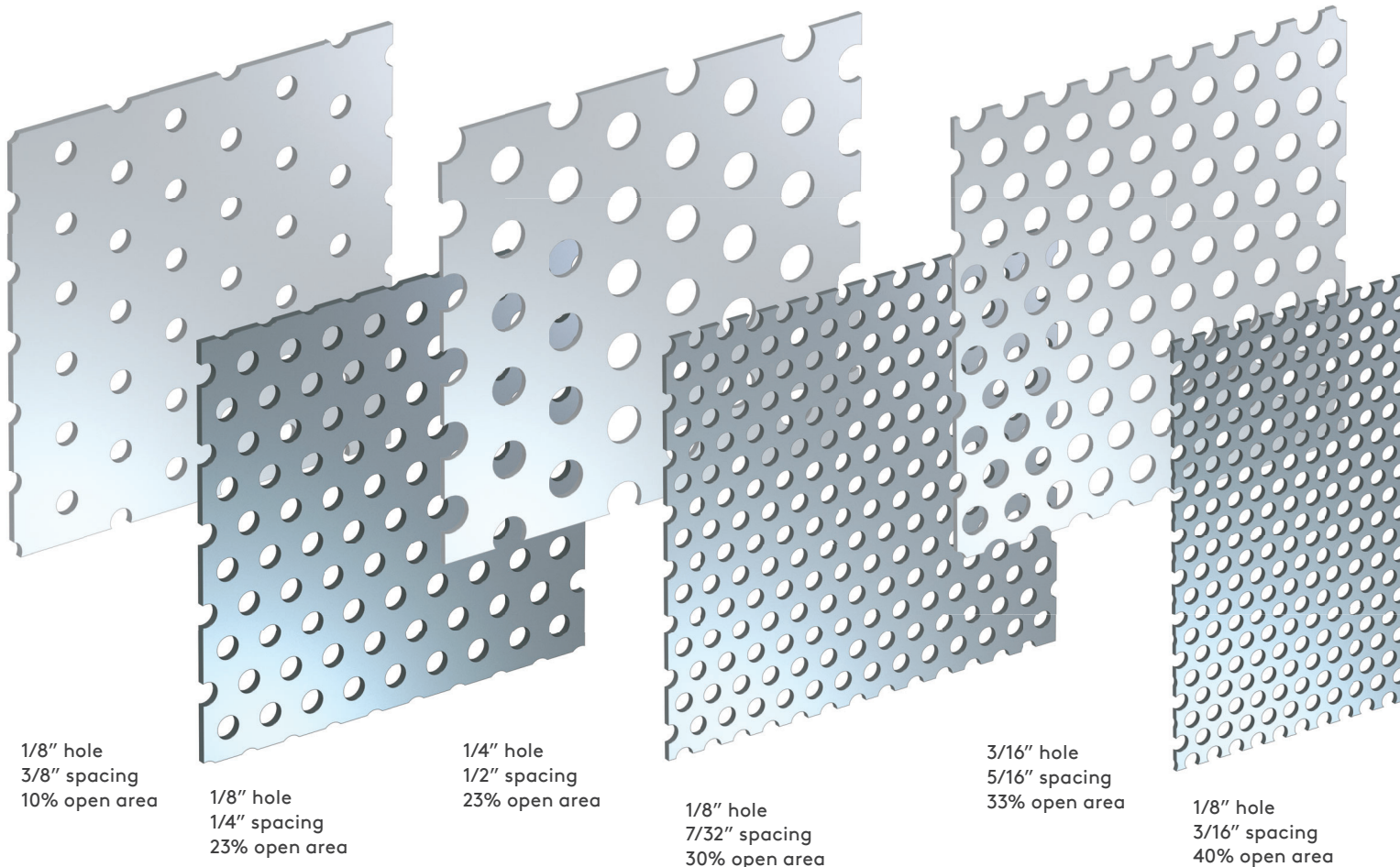
Single Element Building Envelope Solutions



**Morin**<sup>®</sup>  
A Kingspan Group Company

# Perforated Panels

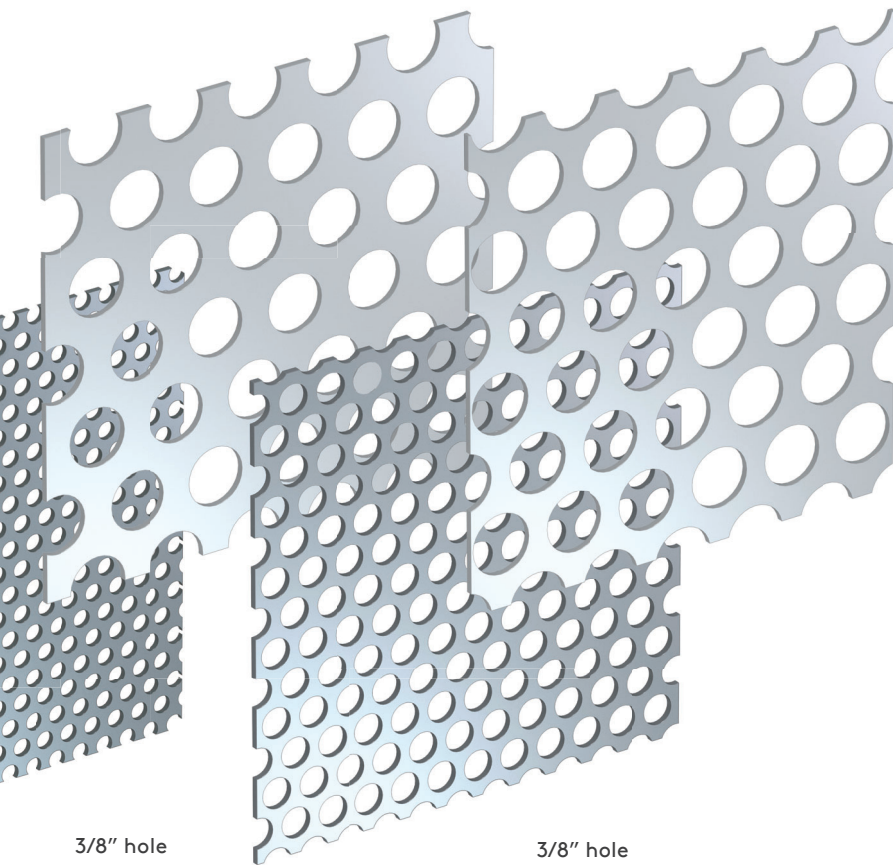
At Morin, we specialize in perforated panels that have a variety of functional and creative applications.





We constantly find new uses for perforations and are prepared to offer unique solutions for every design.

The many architectural applications of Morin perforated panels include passive solar shading, control of light and sound, screening in parking garages and stair towers, or to simply obscure mechanical equipment.



3/8" hole  
9/16" spacing  
40% open area

3/16" hole  
1/4" spacing  
51% open area

3/8" hole  
1/2" spacing  
51% open area

### Suggested Applications

- Sunshade / light filtering
- Noise reduction
- Screening
- Airflow and ventilation
- Wind reduction
- Fencing and barriers

### Suggested Materials and Gauges

- Aluminum – .032" / .040" / .050"
- Stainless steel – 24 / 22 / 20 gauge
- Zinc – 0.8 mm / 1.0 mm  
(minimum hole size for zinc 3/16")

Check with your local Morin representative for all of our perforating capabilities.

### All Morin profiles are available with perforations

Notes: All perforation patterns are shown with direction of coil / panel length from left to right.

Patterns shown are representative of scale. Physical samples are available upon request.

Color coating on both sides is available at an extra cost, otherwise backside will have a standard wash-coat.

Material is painted prior to perforating.

Perforated galvalume is subject to rust in exterior conditions, available for interior applications only.

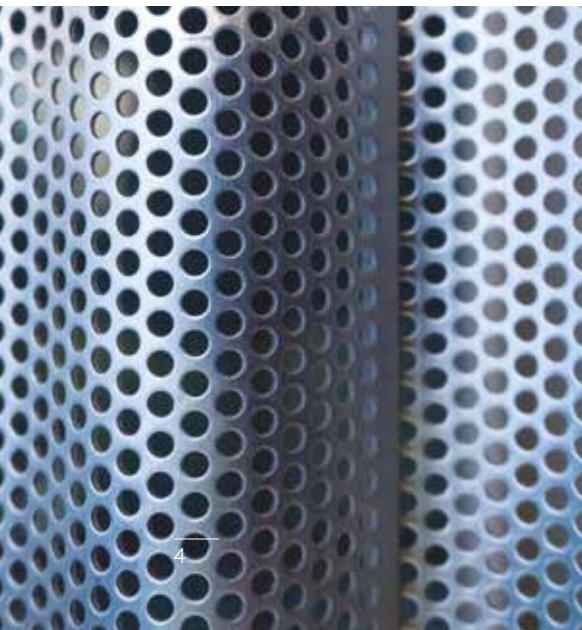
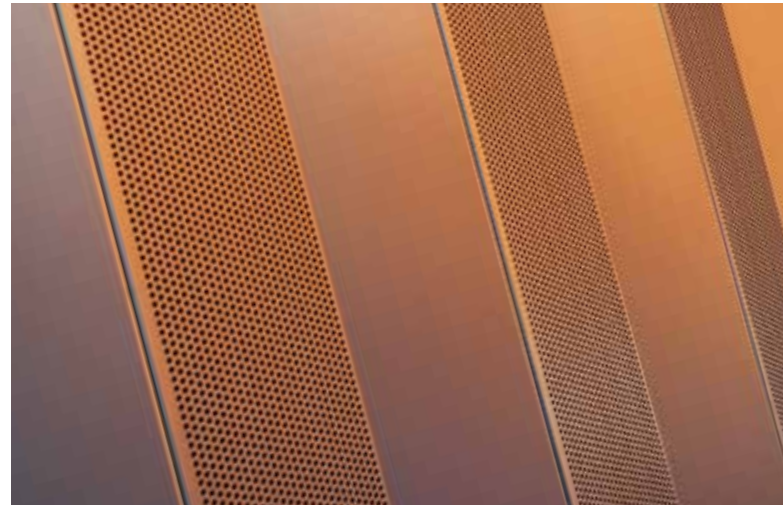
**Custom perforation patterns are available. Contact Morin with your design ideas.**

Please go to [Morincorp.com](http://Morincorp.com) for updates and latest product information including exact patterns and coil directions.



# Architectural Impact

Create a statement with Morin Perforated Panels.





## Case Study Water's Edge 3 Offices

49,000 ft<sup>2</sup> of perforated corrugated panels wrap around this six story certified LEED® Gold office building in Southern California.

The screenwall, which is the building's most striking feature, is composed of both perforated and solid aluminum Morin Matrix® panels. SPF Architects state its design is, "inspired by the play of light on water" and "designed to dematerialize, visually lightening the structure's mass while functionally providing relief from the full brunt of the sun".



Location	Playa Vista, CA
Architects	SPF Architects
Profile	Matrix MX-1
Material	.050 aluminum
Perforation pattern	3/16" holes 5/16" staggered spacing 33% open area
Colors	Bright Silver on both sides

# Case Study

## Georgia Tech Engineered Biosystems Building



At a distance, the screen wall on this research building may seem purely for design aesthetic. Up close, it is apparent that each 4" deep zinc panel cladding the building is strategically designed.

The edges of the panel parallel to the building and windows have a greater percent perforated open area than the edges parallel to the sky. This provides dual functionality as a highly effective sunshade and a privacy screen, while allowing natural light to filter into the building.

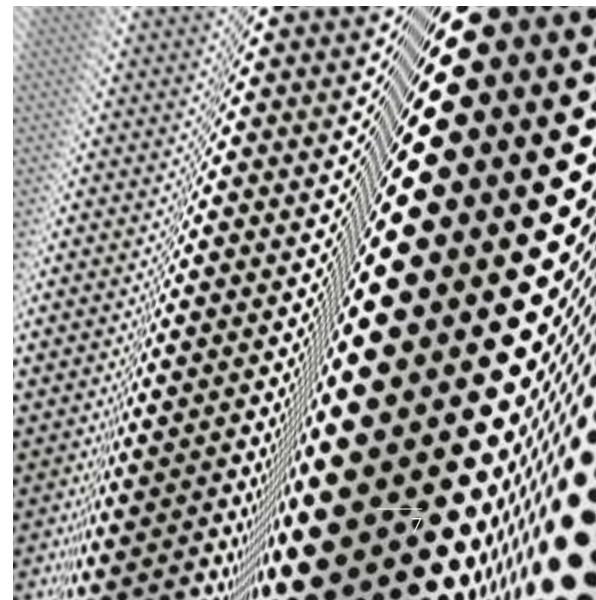
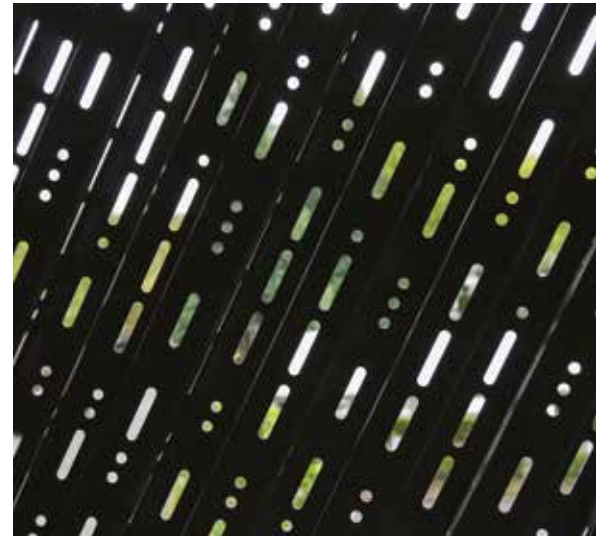
<b>Location</b>	Atlanta, GA
<b>Architects</b>	Cooper Carry
<b>Profile</b>	O-24, O-12 (custom profile)
<b>Material</b>	Zinc (Graphite Gray)
<b>Perforation pattern</b>	1/8" holes 3/16" spacing 40% open area





# Interact with the Environment

Use Morin Perforated Panels to design with natural materials, light and shadows, shapes and patterns.



---

# Contact Details

---

## USA

### HQ / East

685 Middle Street | Bristol  
CT 06010

T: 1-800-640-9501

### West

10707 Commerce Way | Fontana  
CA 92337

T: 1-800-700-6140

### South

1975 Eidson Drive | DeLand  
FL 32724

T: 1-800-640-9501

[www.morincorp.com](http://www.morincorp.com)



Learn more about the Planet  
Passionate initiative by Kingspan Group  
companies at [www.morincorp.com](http://www.morincorp.com)

For the product offering in other markets please contact your local sales representative  
or visit [www.morincorp.com](http://www.morincorp.com)

Care has been taken to ensure that the contents of this publication are accurate, but  
Morin Corporation does not accept responsibility for errors or for information that is  
found to be misleading. Suggestions for, or description of, the end use or application  
of products or methods of working are for information only and Morin Corporation  
accepts no liability in respect thereof.

